



Alex & Matteo
ESTATE AGENTS



28 Quebec Way, London, SE16 7FS

A modern one bedroom apartment located steps away from Russia Dock Woodland and a short walk from Canada Water Station.

The apartment features an open-plan kitchen and reception room and access to a private balcony with hammock feature, a generously sized double bedroom, and stylish modern bathroom. Additional storage can be found in the hallway. The property is surrounded by a plethora of local amenities such as new leisure centre, market, cafes, bars, shopping centre, and restaurants.

COUNCIL TAX - BAND D

- Generous One Bedroom Apartment
- Excellent Location
- Great Transport Links
- Surrounded by Local Amenities
- Private Balcony
- Plenty of Storage
- Wine Fridge

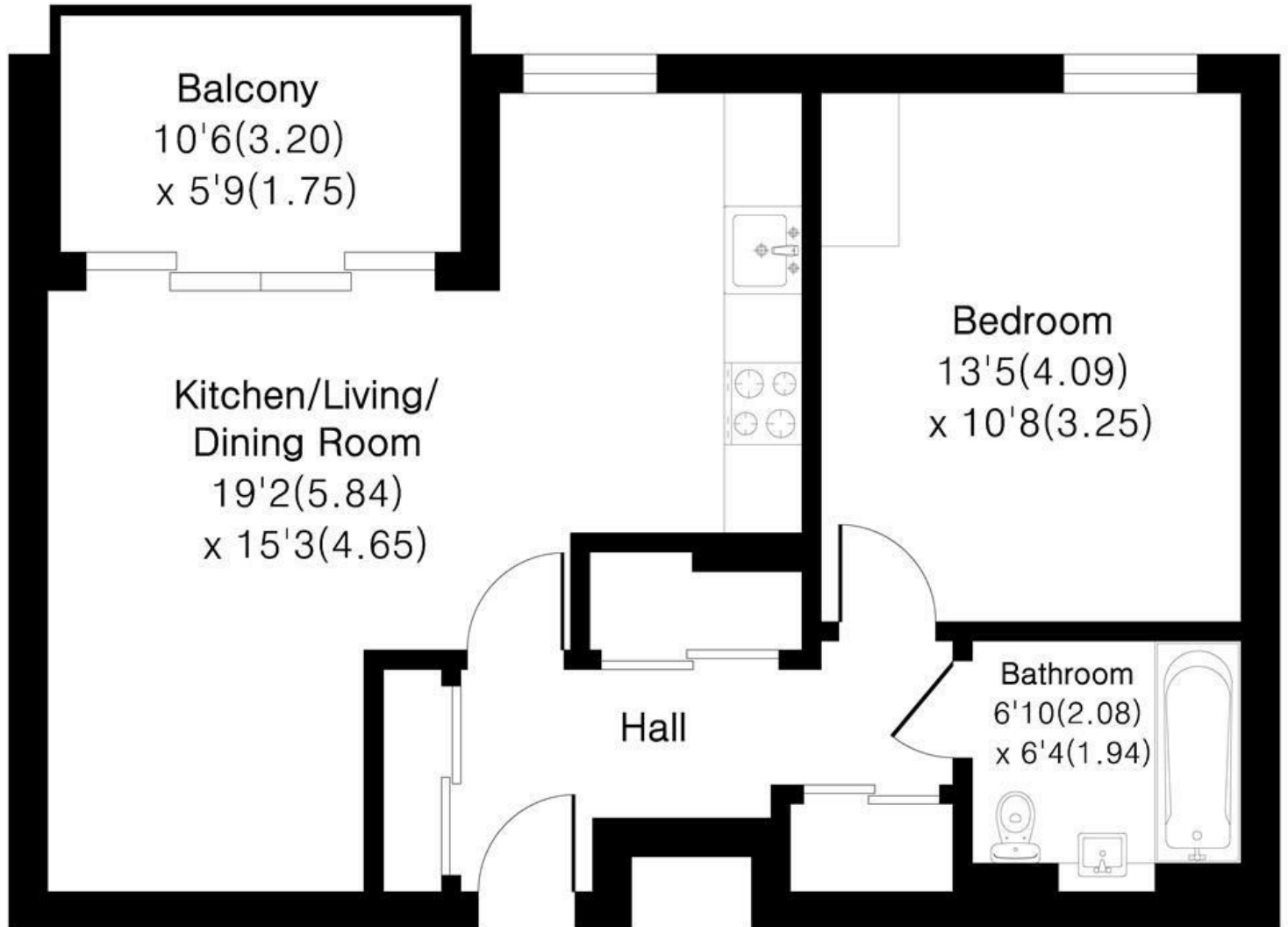
Alex & Matteo
ESTATE AGENTS

£2,250 Per month



Claremont House SE16

Approximate Area = 544 sq ft / 50.5 sq m



Third Floor

Floor plan Produced in accordance with RICS Property Measurement 2nd Edition.
Incorporating International Property Measurement Standards (IPMS2 Residential).
Produced for Alex & Matteo Estate Agents.



Energy Efficiency Rating		
	Current	Potential
Very energy efficient - lower running costs		
(92 plus) A		
(81-91) B	81	81
(69-80) C		
(55-68) D		
(39-54) E		
(21-38) F		
(1-20) G		
Not energy efficient - higher running costs		
England & Wales		
EU Directive 2002/91/EC		